

● Main specifications

Model		NC1-800		NC1-1100	
		(1)E	(2)E	(1)E	(2)E
Capacity	kN	800		1100	
Tonnage rating point (above B. D. C.)	mm	5		5	
Stroke length	mm	100	160	110	180
Stroke per minute	Variable (standard) spm	55~110	40~75	50~100	35~65
Die heigh, slide to bolster	mm	300	320	320	350
Slide adjustment	mm	80		90	
Slide area (L.R X F.B)	mm	540 X 460		630 X 520	
Bolster area (L.R X F.B)	mm	950 X 460	950 X 600	1070 X 520	1070 X 680
Frame gap	mm	240	310	270	350
Frame inside measurement	mm	624		666	
Bolster thickness	mm	140		155	
Main motor	Variable (standard) kW X P	7.5 X 4		11 X 4	7.5 X 4
Main breaker capacity (380/415v, 50/60Hz)	A	30		40	30
Maximum upper die weight	kg	203		256	
Approximate press weight	t	6.0		9.0	
Required air pressure	MPa	0.5		0.5	

Model		NC1-1500		NC1-2000		NC1-2500
		(1)E	(2)E	(1)E	(2)E	(2)E
Capacity	kN	1500		2000		2500
Tonnage rating point (above B. D. C.)	mm	6		6		6.5
Stroke length	mm	130	200	160	250	300
Stroke per minute	Variable (Standard) spm	40~85	30~55	35~70	25~45	20~35
Die heigh, slide to bolster	mm	350	400	410	450	540
Slide adjustment	mm	100		110		120
Slide area (L.R X F.B)	mm	700 X 580		880 X 650		1100 X 730
Bolster area (L.R X F.B)	mm	1170 X 600	1170 X 760	1390 X 680	1390 X 840	1750 X 900
Frame gap	mm	310	390	350	430	470
Frame inside measurement	mm	736		906		1220
Bolster thickness	mm	165		180		180
Main motor	Variable (Standard) kW X P	11 X 4		15 X 4		22 X 4
Main breaker capacity (380/415v, 50/60Hz)	A	40		50		75
Maximum upper die weight	kg	290		1000		1300
Approximate press weight	t	12.7		18.7		28.0
Required air pressure	MPa	0.5		0.5		0.5

● Bellows type die cushion specifications (Option)

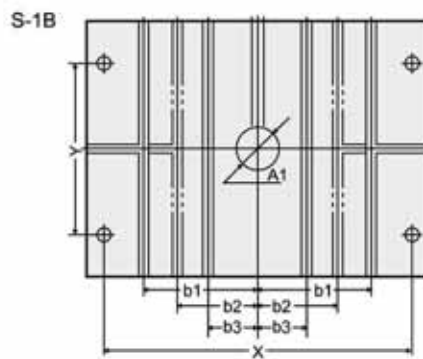
Cushion Model			NCY-8-1	NCY-11-1	NCY-15-1	NCY-20-1	NCY-25-1
Capacity	(at 0.5MPa)	kN	63	80	100	140	140
Stroke length		mm	70	80	80	100	100
Pad area	(LR X FB)	mm	410 X 260	480 X 300	540 X 340	640 X 440	640 X 440

● Dimensions of bolster

Model		NC1-800	NC1-1100	NC1-1500	NC1-2000	NC1-2500	
Bolster area (L-R X F-B) mm	(1)E	950 X 460	1070 X 520	1170 X 600	1390 X 680	-	
	(2)E	950 X 600	1070 X 680	1170 X 760	1390 X 840	1750 X 900	
Dimension of T slot		Size	22	22	28	28	
B-1 Figures in () show only for (2) type	Number of T slots	3	3 (5)	3 (5)	5	5	
	A2	∅150	∅150	∅150	∅200	∅200	
	b3	150	(250)	(300)	250(300)	350	
	b4	-	150	150	150	150	
	<p>NC1-800 NC1-1100 NC1-1500 NC1-2000 NC1-2500</p>						
Standard Bolster type	Number of T slots	3	5	5	5	5	
	Cushion pin hole	24pcs. (∅25)	24pcs. (∅25)	24pcs. (∅28)	35pcs. (∅28)	35pcs. (∅28)	
	c X d	75 X 75	90 X 90	100 X 100	100 X 100	100 X 100	
	b5	150	250	300	300	350	
	b6	-	150	150	150	150	
B-11 Only for (2) type	<p>NC1-800 NC1-1100 NC1-1500 NC1-2000 NC1-2500</p>						
	Number of T slots	3	3(5)	3(5)	5	5	
	a1 X a2	360 X 180	400 X 200	440 X 220	480 X 240	520 X 260	
	b7	150	(250)	(300)	250(300)	350	
	b8	-	150	150	150	150	
B-21 Figures in () show only for (2) type	<p>NC1-800 NC1-1100 NC1-1500</p>						
	<p>NC1-2000</p>						
	<p>NC1-2500</p>						
Positioning pin Figures in () show only for (2) type mm	e	150	150	150	200	250	
	f	200(250)	230(300)	270(350)	310(375)	(400)	
	pin hole dia depth	2-∅30 DP35	2-∅30 DP35	2-∅30 DP35	2-∅30 DP35	2-∅30 DP35	

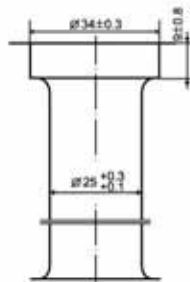
● Dimensions of Slide

Model		NC1-800	NC1-1100	NC1-1500	NC1-2000	NC1-2500	
Slide area (L X F B) mm	(1)E, (2)E	540 X 460	630 X 520	700 X 580	880 X 650	1100 X 730	
Dimension of T slot	Nominal size	22	22	28	28	28	
	Number of T slots	2	2	4	4	6	
Slide standard type	S-1B	A1	∅50	∅70	∅70	∅70	∅70
		b1	150	150	250	300	450
		b2	-	-	150	150	300
		b3	-	-	-	-	150
Suspension pin hole mm	X X Y	440 X 360	500 X 420	600 X 480	700 X 500	900 X 600	
	Pin hole	4pcs. (∅17.5)	4pcs. (∅23)	4pcs. (∅28)	4pcs. (∅28)	4pcs. (∅28)	

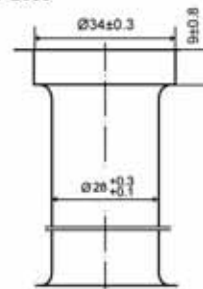


■ Dimensions of cushion pin hole

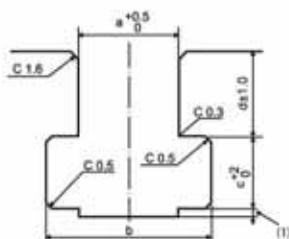
NC1-800
NC1-1100



NC1-1500
NC1-2000
NC1-2500

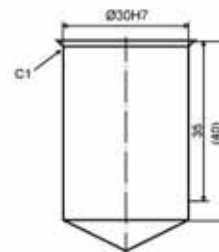


■ Dimensions T-slots of for both slide and bolster

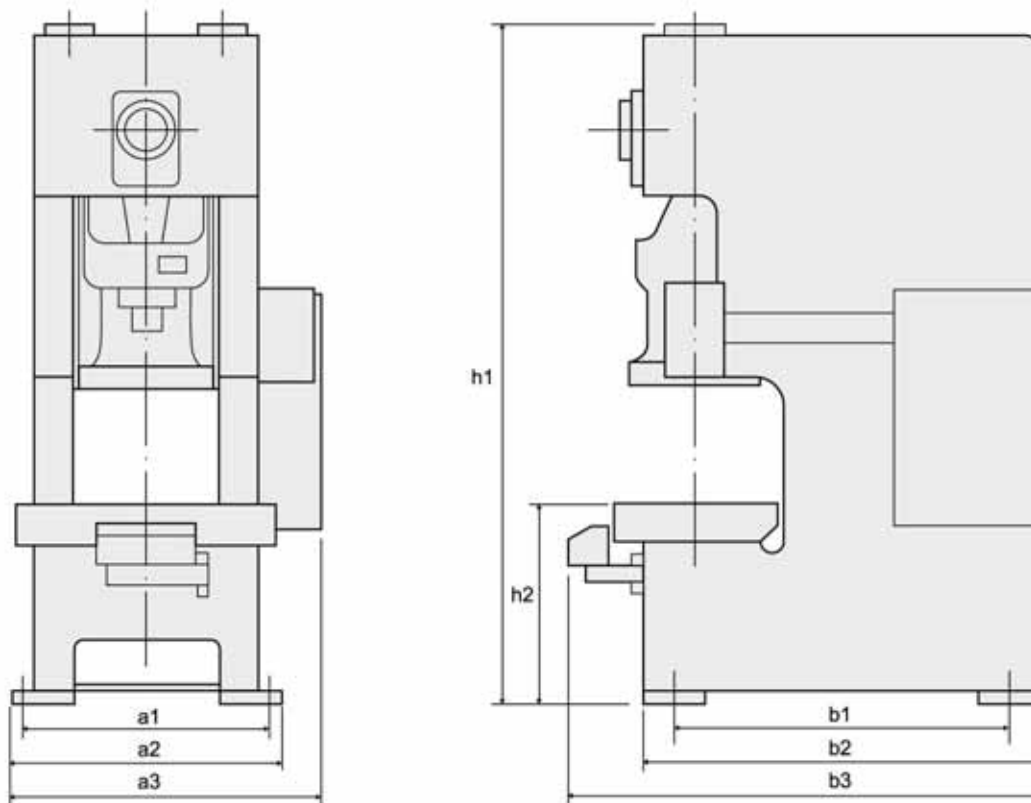


Symbol	Size 18	22	28
a	18	22	28
b	30 ± 0.3	37 ± 0.3	46 ± 0.3
c	12	16	20
d	15	19	23
applied bolt	M16	M20	M24

■ Dimensions of positioning pin hole



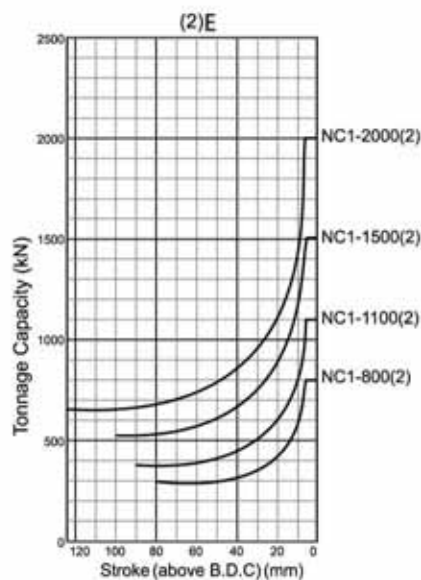
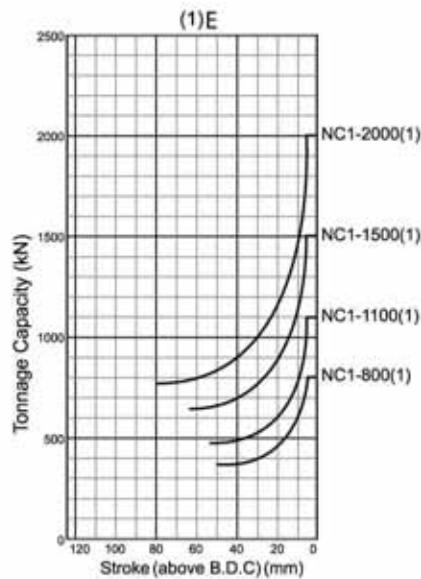
● Machine Dimensions



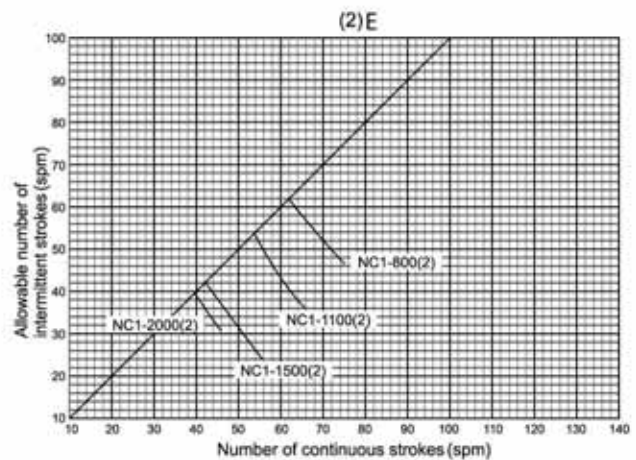
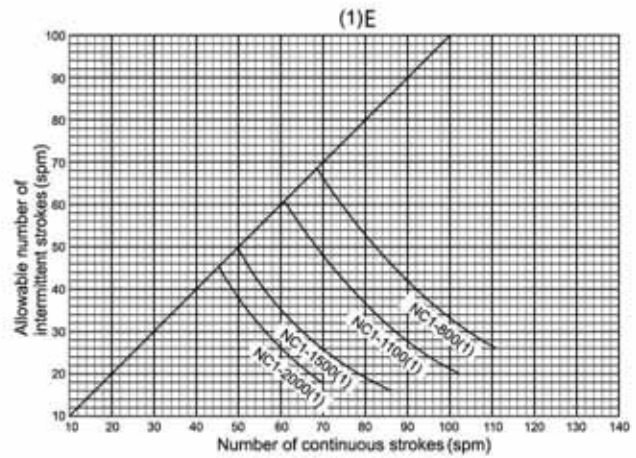
		Position of anchor bolt	Floor space required	Max measurement of press	Press overall height	Bolster surface height
		a1 X b1	a2 X b2	a3 X b3 [※]	h1	h2
NC1-800	(1)E	920 X 1160	1000 X 1350	1150 X 1705	2717	900
	(2)E	920 X 1210	1000 X 1400	1150 X 1755	2803	
NC1-1100	(1)E	1040 X 1340	1120 X 1560	1278 X 1915	3025	900
	(2)E	1040 X 1440	1120 X 1660	1278 X 2015	3003	
NC1-1500	(1)E	1140 X 1560	1220 X 1810	1383 X 2165	3100	900
	(2)E	1140 X 1660	1220 X 1910	1383 X 2265	3167	
NC1-2000	(1)E	1360 X 1890	1440 X 2170	1588 X 2525	3610	1000
	(2)E	1360 X 2020	1440 X 2300	1588 X 2655	3695	
NC1-2500	(2)E	1730 X 2135	1850 X 2425	1975 X 2550	4375	1100

※ b3 : Please add 100mm in case a die lifter is equipped.

● Stroke-tonnage curve



● Allowable number of intermittent strokes



● Press Standard Equipment

- Variable speed motor (inverter)
- Motorized slide adjustment
- Hydraulic overload protector
- Automatic grease lubrication device (with interlock)
- Punch holder
- Air ejector (3/8B, 20-way valve)
- Air outlet (3/8B, 2-way valve)
- Solid state controller (MPC)
- LCD operation panel
- Electronic crank angle indicator
- Hour meter (6 digits) 1 unit
- Preset counter (6 digits) 3 units
- Maintenance counter (8 digits) 1 unit
- Timing switch (4 spare cams)
- Die protect (2 circuits, no receptacles)
- Data bank (20 dies)
- Two-hand operation box (T stand)
- Operation selector (inching, off, single, continuous)
- Clutch & brake solenoid valve with monitor
- Anti-repeat circuit
- Side cover
- Instruction manuals

● Optional Equipment

- Bellows type die cushion
- Slide knockout
- Die lifter
- Die clamper
- Air ejector addition
- Air outlet addition
- Automation equipment
- Increased balancer capacity
- Flywheel brake
- H.O.L.P. low pressure setting device
- Provisional machining hole for PTO shaft
- Anti-vibration device
- Anchor bolts
- Tool box
- Power source other than 200V
- Main motor reverse drive equipment
- Stand type operation panel
- Continuous single stroke device
- Preset stop position selector
- Die space light (spot type)
- Main circuit no-fuse breaker
- Electric interface for feeder
- Tool receptacle (100V, 200V)
- Load monitor
- Timing switch spare cam addition
- Automatic slide adjustment device
- Optical safety device
- Guard
- Die block (with plug)

※ Optional Control System

CE Marking & OSHA Standard Compliance for Europe and America

● Machines Dimension

