

*Maximum pressure  
attained at high position  
of slide stroke*



Sample parts produced by Model CF1-22,220 ton press

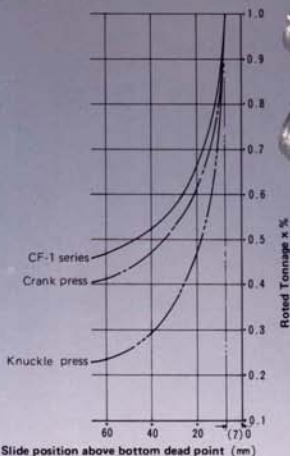


Sample parts produced by Model CF1-40,400 ton press



# Precision forming of parts and long tool life

## • High Torque

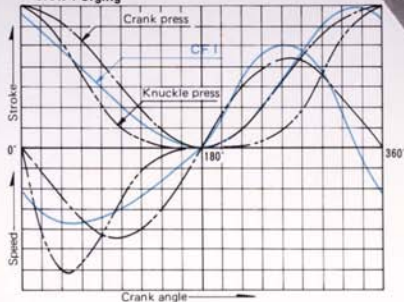


Slide position above bottom dead point (mm)

The simplified link mechanism provides higher tonnage capacity compared to conventional toggle or crank type presses. This eliminates the necessity of a larger press.

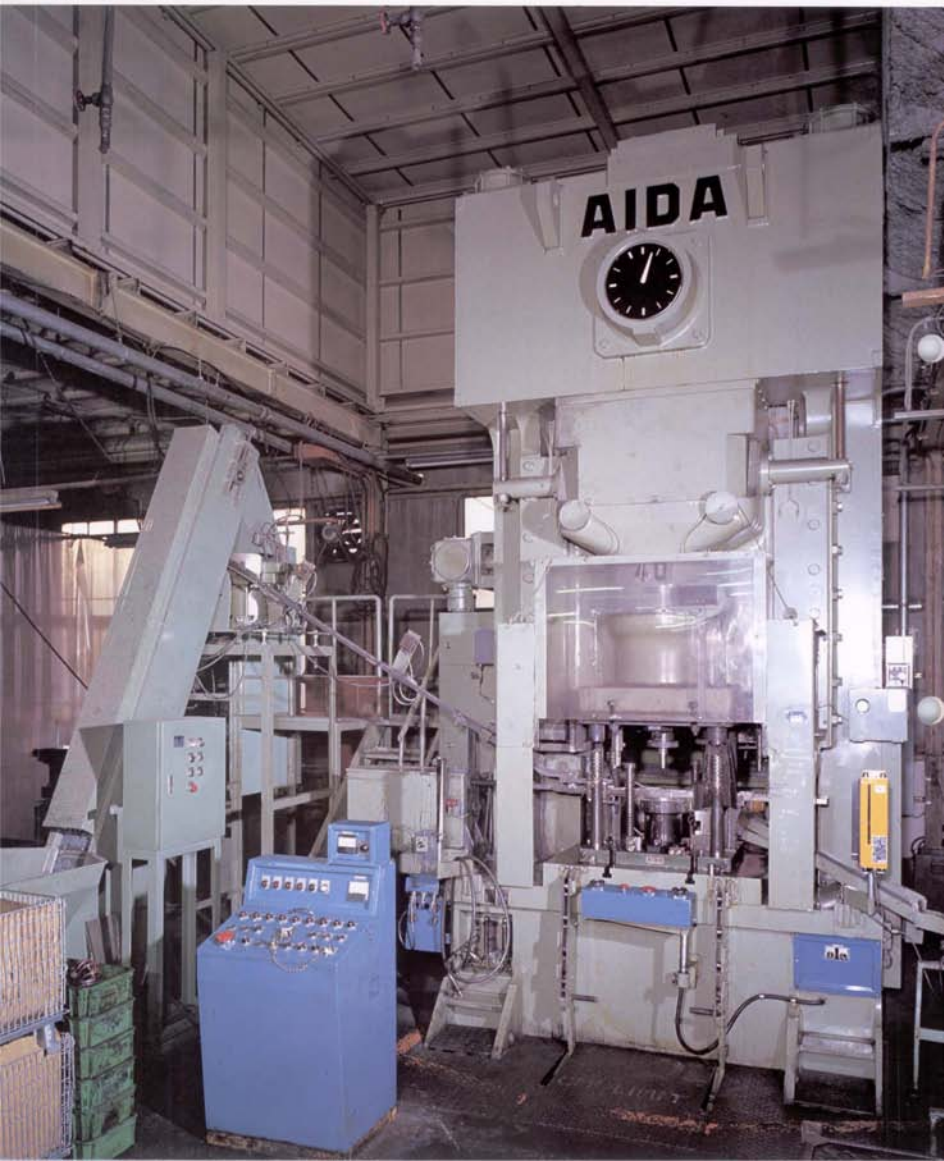


## • Slow-Forging

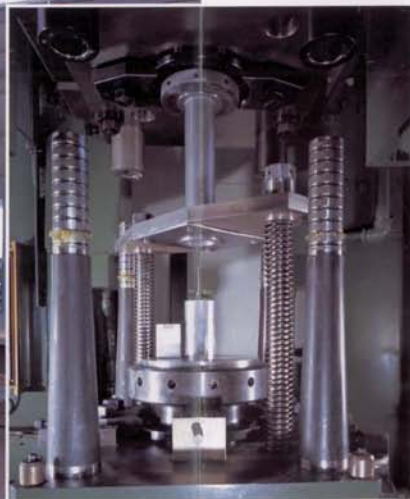
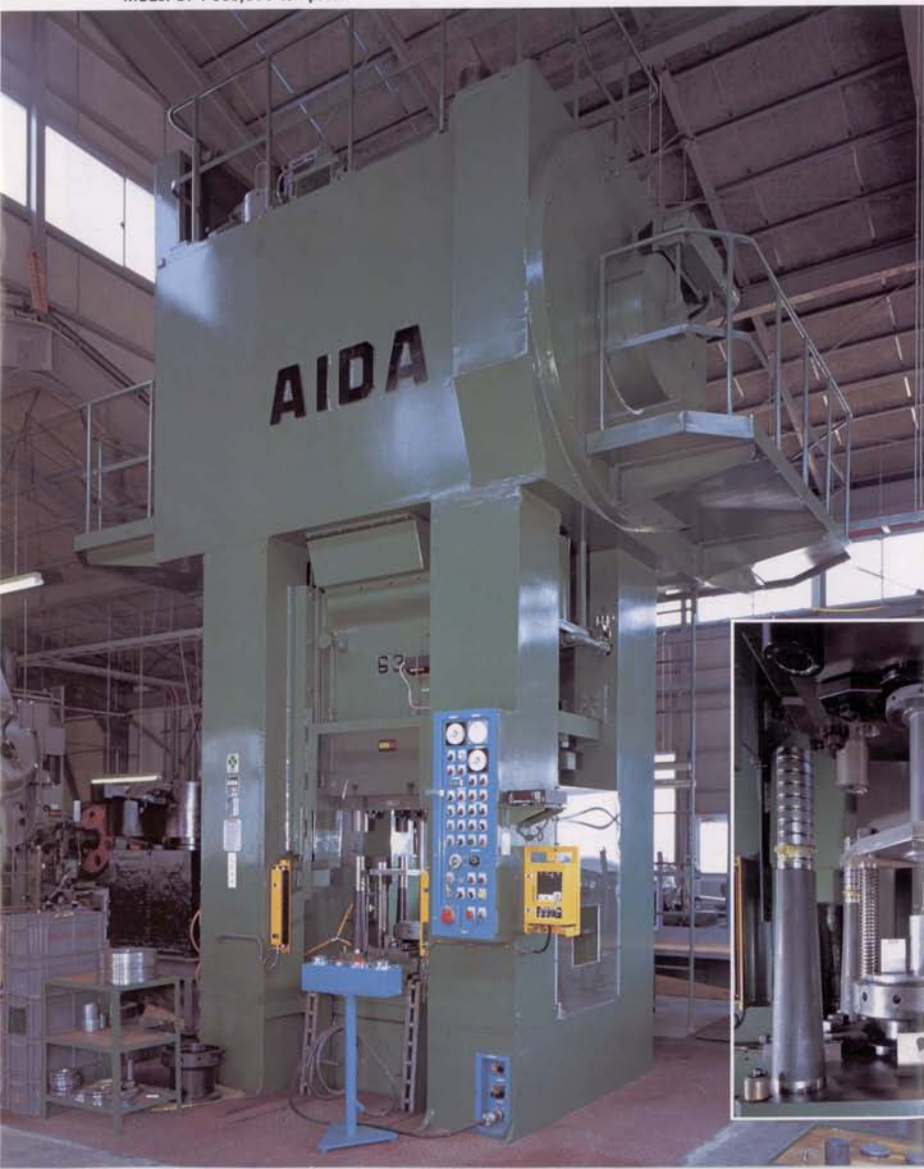


Slower forging speed reduces impact force on material which facilitates better material flow, consequently improves the precision of products and extends die life.

Model CF1-40C, 400 ton press



Model CF1-63S, 630 ton press



Model CF1-63S, 630 ton press





*Aida's cold forging technologies play important rolls  
in the automotive and other industrial fields*

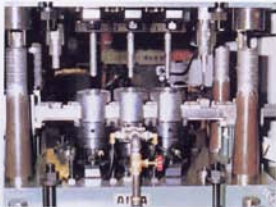


# *Ample provisions for facilitating production automation*

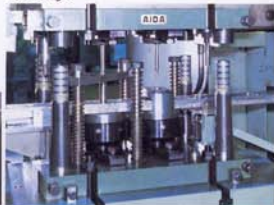


Standard die set

For 3 stages



For 2 stages

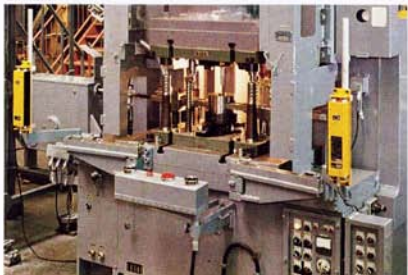


For single stage

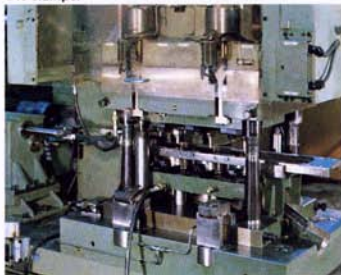


# Drastically reduced die setting time

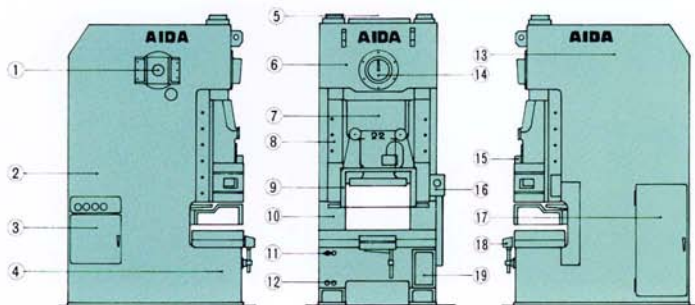
Die lifter



Die clumper



# Superior operability



- |  |   |
|--|---|
| ① Power take-off shaft for automation                  | ⑪ Lever switch for flywheel brake           |
| ② Centralized lubrication system                       | ⑫ Air outlet                                |
| ③ Air/oil control box                                  | ⑬ Clutch and brake (AIDA Wet Type – Pat. P) |
| ④ Bed equipped with knock-out device                   | ⑭ Crank angle indicator                     |
| ⑤ Balance cylinder built in the frame                  | ⑮ Slide adjustment indicator                |
| ⑥ Gears (2 step reducing type – driven in an oil-bath) | ⑯ Overload protector                        |
| ⑦ Slide (with slide adjusting device)                  | ⑰ Control panel                             |
| ⑧ Slide guide  | ⑱ Operation box                             |
| ⑨ Safety shutter                                       | ⑲ Centralized operation panel               |
| ⑩ Frame of high rigidity (honey-comb structure)        |   |